

1 DETAIL

(N) SCHED #40 PVC W/ OPEN END AT TOP OF +42 RAILING SCREW TO P.W. W/ 3/8"x2-1/2" WOOD SCREW. INSERT STIFFENER WHERE NEEDED

(N) 2x D.FIR W/ 2-84 48" OC MAX

(E) 2-3/4" DIAM MTL POLE 48" OC

(N) 2"x2"x8" L-MTL

(E) FINISH SURFACE

(E) CONDUIT STRAP

(E) CONC CURB

(N) 2x TOP RAIL CONT AT HAND SUPPORT

(N) 2x BLKG W/ PIPE FLANGE

(N) 2x D.FIR W/ 2-84 48" OC MAX

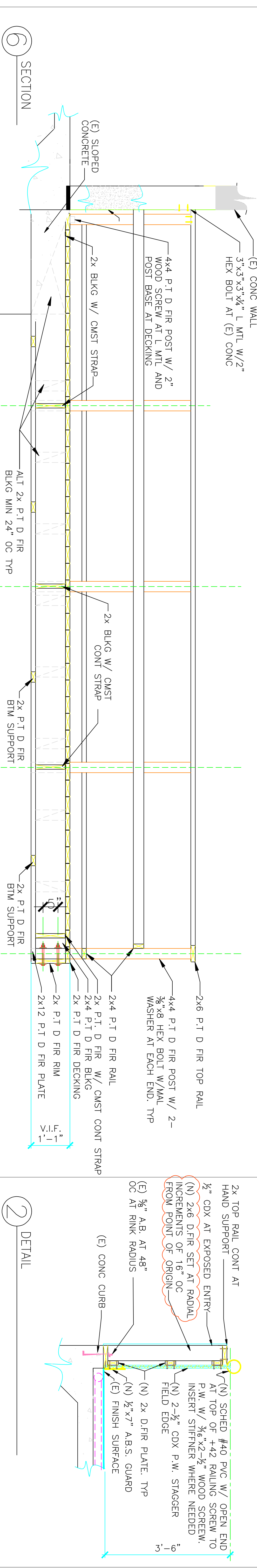
(E) 2-3/4" DIAM MTL POLE 48" OC

(N) 2"x2"x8" L-MTL

(E) FINISH SURFACE

(E) CONDUIT STRAP

(E) CONC CURB



2 DETAIL

(N) SCHED #40 PVC W/ OPEN END AT TOP OF +42 RAILING SCREW TO P.W. W/ 3/8"x2-1/2" WOOD SCREW. INSERT STIFFENER WHERE NEEDED

(N) 2-3/4" CDX P.W. STAGGER FIELD EDGE

(N) 2x D.FIR PLATE. TYP

(N) 1/2"x7" A.B.S. GUARD

(E) FINISH SURFACE

(E) CONC CURB

(N) 2x TOP RAIL CONT AT HAND SUPPORT

1/2" CDX AT EXPOSED ENTRY

(N) 2x6 D.FIR SET AT RADIAL INCREMENTS OF 16" OC FROM POINT OF ORIGIN

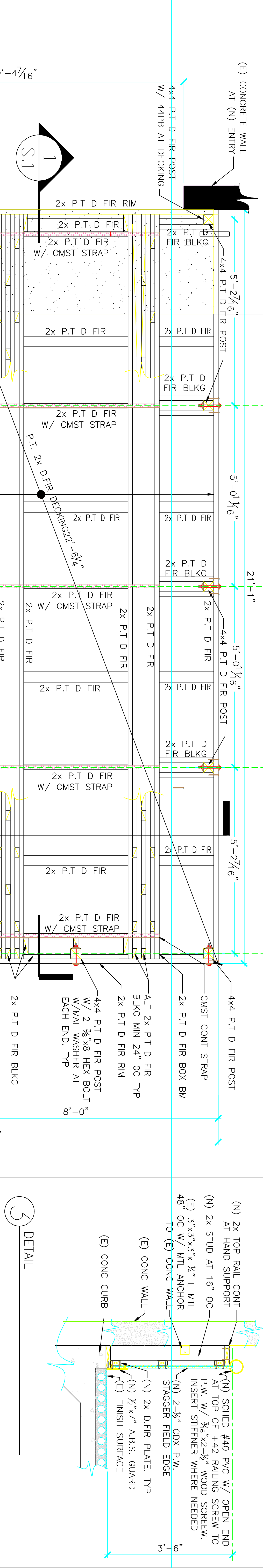
(E) 3/8" A.B. AT 48" OC AT RINK RADII

(E) CONC CURB

(N) 2x D.FIR PLATE. TYP

(N) 1/2"x7" A.B.S. GUARD

(E) FINISH SURFACE



3 DETAIL

(N) 2x TOP RAIL CONT AT HAND SUPPORT

(N) 2x STUD AT 16" OC

(E) 3"x3"x3"x 1/2" L MTL 48" OC W/ MTL ANCHOR TO (E) CONC WALL

(E) CONC WALL

(N) 2x D.FIR PLATE. TYP

(N) 1/2"x7" A.B.S. GUARD

(E) FINISH SURFACE

(N) 2-3/4" CDX P.W. STAGGER FIELD EDGE

(N) 2x D.FIR PLATE. TYP

(N) 1/2"x7" A.B.S. GUARD

(E) FINISH SURFACE

(E) CONC CURB

(N) SCHED #40 PVC W/ OPEN END AT TOP OF +42 RAILING SCREW TO P.W. W/ 3/8"x2-1/2" WOOD SCREW. INSERT STIFFENER WHERE NEEDED

(N) 2-3/4" CDX P.W. STAGGER FIELD EDGE

(N) 2x D.FIR PLATE. TYP

(N) 1/2"x7" A.B.S. GUARD

(E) FINISH SURFACE

(E) CONC CURB

(N) 2x TOP RAIL CONT AT HAND SUPPORT

(N) 2x BLKG W/ PIPE FLANGE

(N) 2x D.FIR W/ 2-84 48" OC MAX

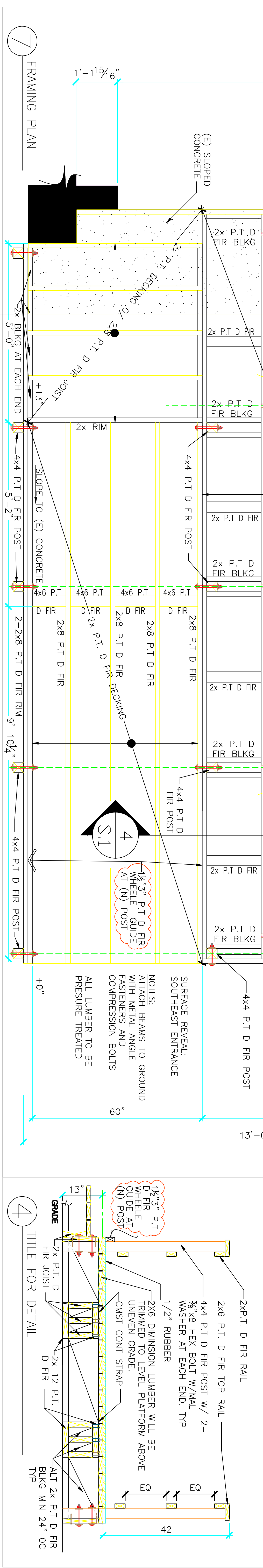
(E) 2-3/4" DIAM MTL POLE 48" OC

(N) 2"x2"x8" L-MTL

(E) FINISH SURFACE

(E) CONDUIT STRAP

(E) CONC CURB



4 TITLE FOR DETAIL

4x4 P.T.D FIR POST W/ 2-3/8" HEX BOLT W/MAL WASHER AT EACH END. TYP

1/2" RUBBER

2x6 DIMENSION LUMBER WILL BE TRIMMED TO LEVEL PLATFORM ABOVE UNWEVEN GRADE.

CMST CONT STRAP

2x P.T.D FIR JOIST

ALT 2x P.T.D FIR BLKG MIN 24" OC

16 SCALE 3/4"=1'-0"
DRWN 08-11-10

Placer County
 Mad County

ICELAND SKATING RINK
 1430 DEL PASO BLVD
 SACRAMENTO CALIFORNIA 95815
 PHONE 916-799-3121

OWNER / APPLICANT
 ROB KERTH
 SACRAMENTO, CALIFORNIA 95693
 PHONE 916-799-3128

This plan and all plans are protected by the Copyright Laws of the United States Title 17 sec501.506. The home owner may not reproduce in part or whole without the written consent of Jim C Penka

S.01
 A.P.N.

NO.	DATE	REVISIONS	REMARKS

REVISION NUMBER COMMENT RE # REVISION CLOUD

J.C.P. Drafting