

BEYOND POWER

“ For me, SMUD must do more than provide energy. People with autism are susceptible to mood changes due to lighting. Discovering how we can help children with autism thrive through light – now that’s a bright idea. ”

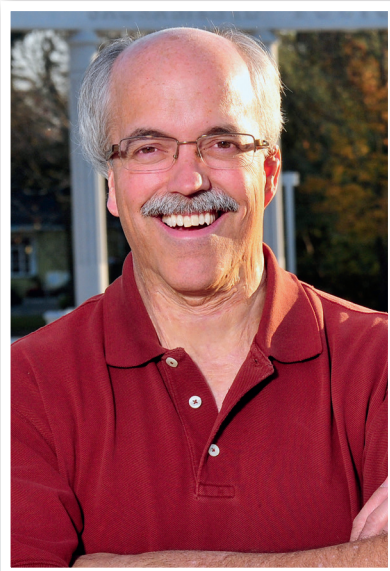
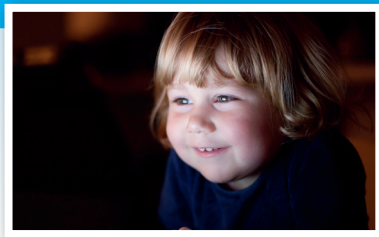
- ROB

ROB KERTH | **SMUD Board**



Rob Kerth

Sacramento Municipal Utility District
Director, Ward 5



DISCOVERING THE INFLUENCE OF LIGHT

For many children with autism, lighting plays an important part in how they feel every day.

At SMUD, I worked to secure grant funding for our groundbreaking **Lighting for the Spectrum** program. This study, in collaboration with the UC Davis Mind Institute, focused on the impact of lighting in households with children with autism.

Lights with mellow colors, like blue, can help people with autism relax and inspire creativity. Conversely, flickering, humming, or harshly colored lights can be overwhelming and even harmful. For this reason, SMUD is working with families to light up their homes in a better way.

“Once the new lighting was installed, we immediately saw differences. The impact it had on our son Max, and our family, was life-changing.”

**- JOHN & REBECCA
HUERTA**

